

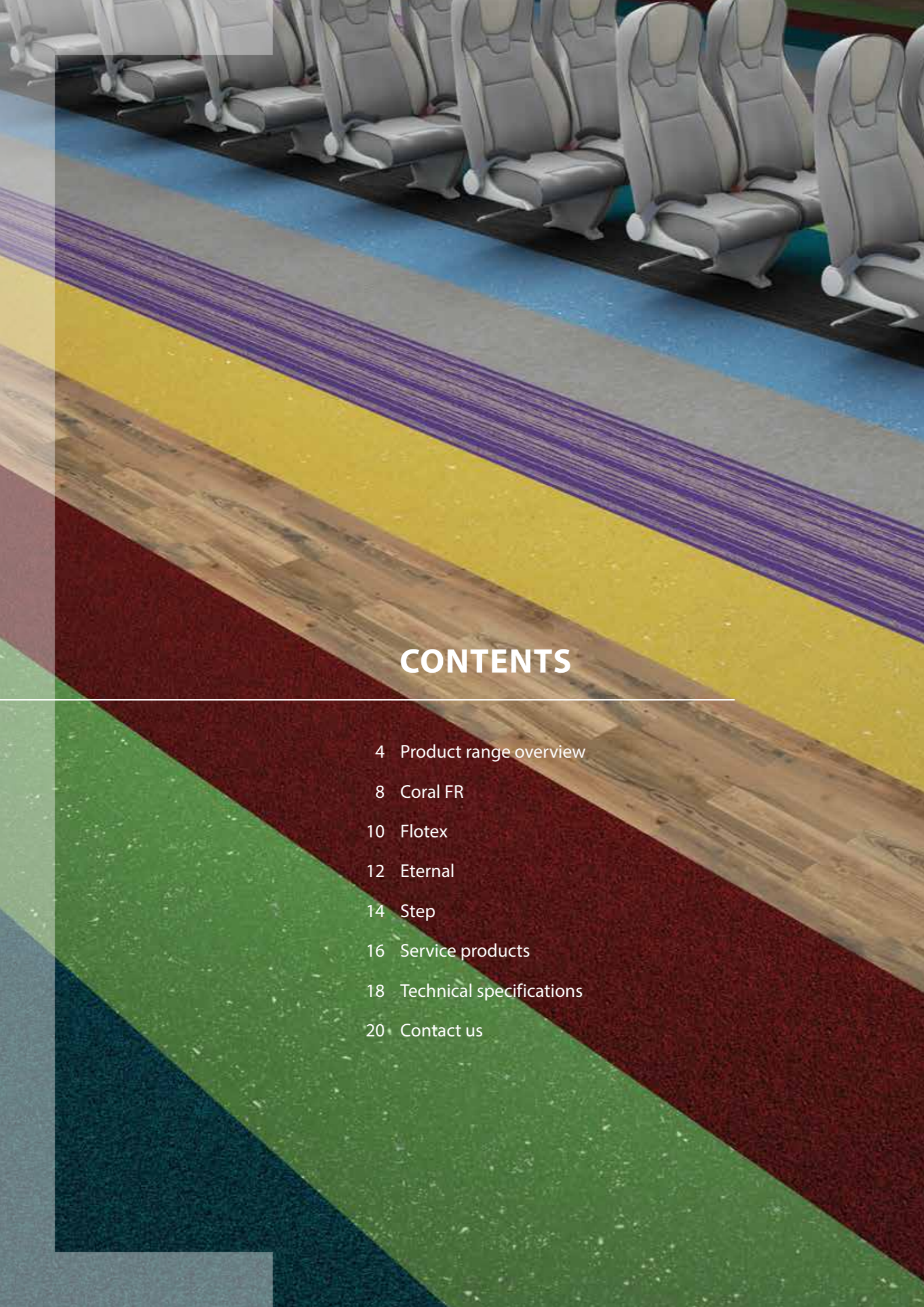
The image shows the interior of a bus or coach. The seats are blue with a white speckled pattern and are arranged in rows. The floor is a dark, speckled material. The lighting is bright, coming from windows on the right side of the frame.

BUS & COACH FLOOR COVERINGS

creating better environments

forbo

FLOORING SYSTEMS



FORBO FLOORING, YOUR PARTNER OF CHOICE IN BUS & COACH

For Forbo Flooring, creating better environments means a better working, living or travel environment. To achieve this, Forbo has developed an unrivalled and versatile floor covering collection that truly adds to the quality of people's lives wherever they are.

Creating better environments also means caring for the environment and its people. For more than 100 years, inspired by the world around us, Forbo Flooring has been producing floor coverings. By using state of the art production processes we minimize the impact on our environment. All our manufacturing operations are ISO 14001 certified, raw materials are used efficiently and waste is minimised and recycled wherever possible. Ongoing research and development continue alongside an active environmental policy.

Forbo Flooring Systems, addresses all the issues designers/specifiers need to consider when looking at the floor covering needs for bus and coach interiors.

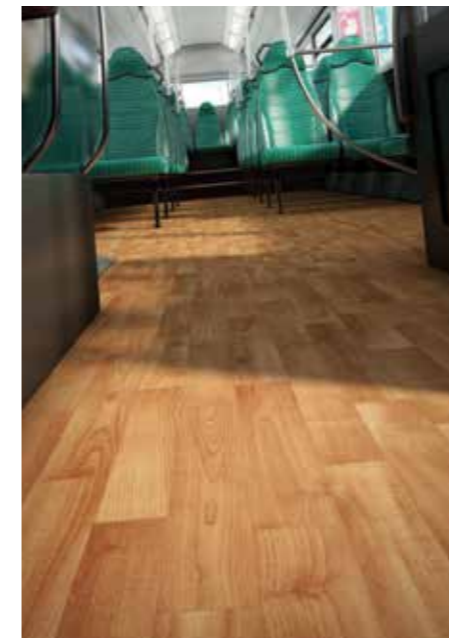
Bus and coach interiors, including the flooring, play a key role in achieving customer satisfaction. However, designing a comfortable and aesthetically pleasing interior is not easy because the bus and coach industry has to meet an array of health and safety legislation. Forbo Flooring Systems offers the widest variety of flooring solutions that meet all these regulations and also provides all the expert advice you may need when selecting floor coverings for this specialist market.

Given that most vehicle interiors have to withstand heavy foot traffic, a durable flooring solution is a must. By investing in high-quality flooring – including effective entrance systems – and ensuring regular cleaning, operators can prolong the life of the vehicle flooring and keep it looking good. Coral FR entrance systems offer the ideal solution for entrance areas, as they meet all the necessary legislation while providing a stylish and effective barrier system.

The combination of precisely-developed materials and unique construction methods makes our products exceptionally durable, ensuring high appearance retention and low wear characteristics.

CONTENTS

- 4 Product range overview
- 8 Coral FR
- 10 Flotex
- 12 Eternal
- 14 Step
- 16 Service products
- 18 Technical specifications
- 20 Contact us



PRODUCT RANGE

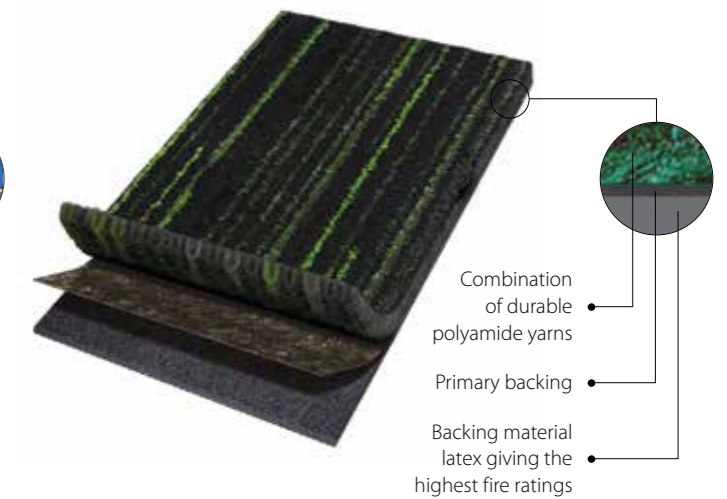
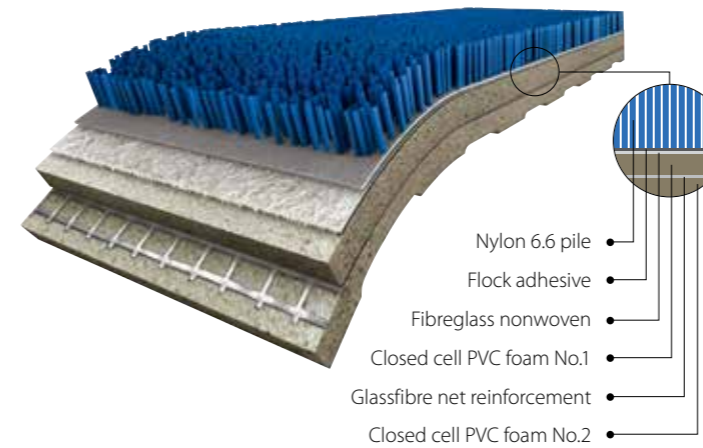
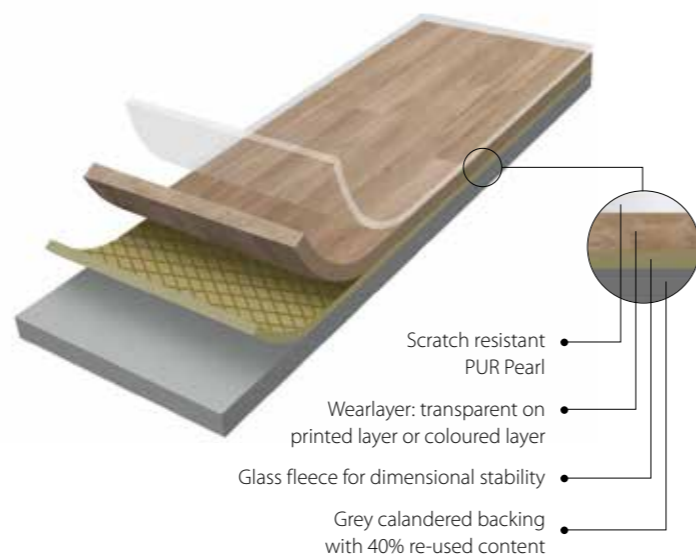
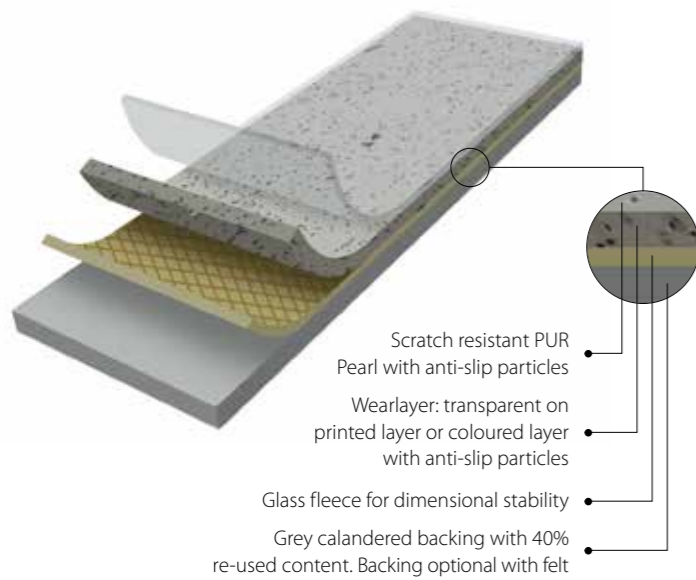
Forbo Flooring Systems offers textile, flocked flooring and safety vinyl for buses and coaches. All of these products meet international industry requirements and include a slip resistance rating of up to R12.

Forbo's products are fully certified and combine durability and a wide variety of designs and colours.

You can choose from a rich diversity of designs, ranging from natural designs to the sparkingly innovative. Our products are both stylish and extremely hard-wearing. We guarantee a combination of the best products in the market supplied from one specialised manufacturer.

coral[®] FR
flotex[®]
eternal
step[®]

PRODUCT OVERVIEW



step®

A durable floor covering combining outstanding slip resistance (**up to R12**) with a wide range of design possibilities. The PUR Pearl surface provides superior, long-lasting appearance and performance.

Benefits:

- R10, R11 and R12 with anti slip enhanced performance
- PUR Pearl lacquered surface providing easy cleaning and maintenance
- Low gloss surface for low scuff and a natural look
- Coloured durable wear layer for a long-lasting appearance
- High recycled PVC content
- Wide design variety
- Optional with or without felt backing for better adhesion properties

eternal

A highly durable floor covering with a wide range of design possibilities. The PUR Pearl surface provides superior, long-lasting appearance and performance.

Benefits:

- R10 in anti slip enhanced performance
- PUR Pearl lacquered surface providing easy cleaning and maintenance
- Low gloss surface for low scuff and a natural look
- 100% transparent durable wear layer for a long-lasting appearance
- High recycled PVC content
- Wide design variety
- Optional with or without felt backing for better adhesion properties

flotex®

A unique floorcovering, combining the cleaning properties and durability of a resilient flooring with the comfort, slip resistant and acoustic properties usually associated with textiles.

Benefits:

- Nylon 6.6 ensures high durability
- Hygienic
- Flotex vision uses high definition printing technology. With 500+ references as standard and the opportunity for custom design or re-colouring of designs
- Easy to clean; easy soil removal due to short nylon fibres
- Improved indoor air quality (independently proven by Allergy UK)
- Slip resistant

coral® FR

The market leader in entrance systems providing an exceptionally versatile and proven range of 'clean-off' entrance system products and carpets.

Benefits:

- High moisture absorption
- Dirt scraping for effective clean-off
- High dirt storage
- Advanced colouring and choice
- Excellent at soil hiding

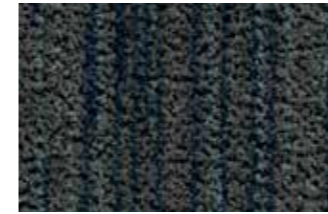


coral® FR

By stopping up to 95% of walked in dirt and moisture, our Coral FR can prolong the life of your floor as well as greatly reduce cleaning costs and the risk for slipping. Delivering superior performance in even the toughest environments. Whether facing rain, snow, sand or soil.

Coral FR is ideal for passenger walkways and entrances including steps. Our range includes a large selection of styles and designs to suit your requirements.

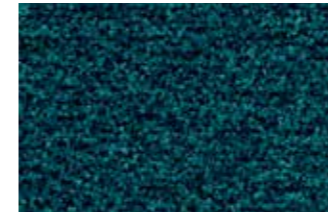
coral® brush FR



5767 | slate blue



5754 | straw brown



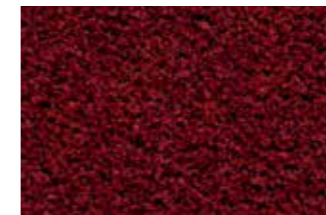
5705 | bondi blue



5724 | chocolate brown

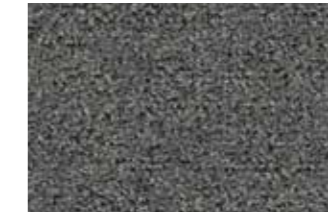


5722 | cornflower blue

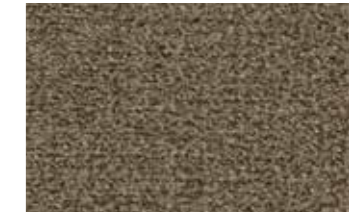


5723 | cardinal red

coral® classic FR



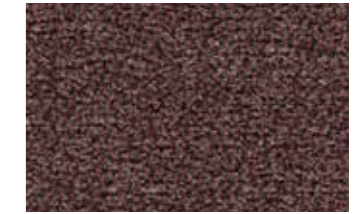
4751 | silver grey



4774 | khaki



4756 | bronztone



4759 | old rose



4727 | navy blue



4753 | bright red

coral® duo FR



9714 | Sicilian sand



9724 | cafe supreme



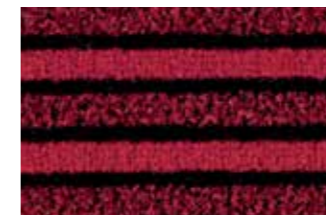
9710 | luna pearl



9730 | black diamond

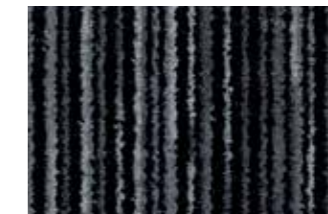


9727 | Volga blue

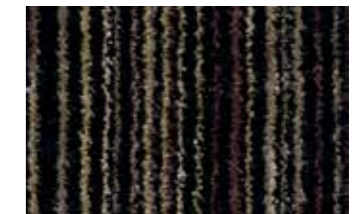


9723 | African red

coral® welcome FR



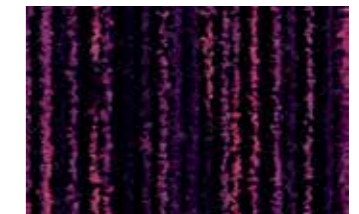
3201 | silver shadow



3202 | desperado



3208 | matrix



3219 | colour purple



3207 | blue velvet



3206 | volcano

Shown above is only a selection of designs and colourways available.
To view the full range please visit www.forbo-flooring.com/bus



flotex®

A unique floor covering that looks and feels like a carpet but with upright fibres making it easy to clean. Flotex has a smooth, velour like surface that is comfortable to walk on, with excellent slip resistant properties.

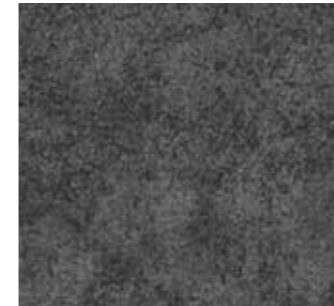
Flotex Colour designs are characterised by their subtle nuances in colour and by the design styles that deliver small scale designs and a semi plain all-over look.

Flotex Vision represents the unique high definition digital print collection that creates superior texture with almost 3D-like appearance. Flotex Vision, through its technology, allows for large endless pattern repeats and vivid life like colours creating a new dimension for Flotex and making the product attractive for today's bus and coach environments.

Thanks to its unique construction, which helps to reduce the amount of allergens in the atmosphere, Flotex has been awarded the prestigious Allergy UK Seal of Approval.



flotex® colour



s290002 | grey



s482026 | neptune



s246033 | emerald



s290023 | espresso



s482037 | grey



s246004 | gull



s246034 | lilac



s382012 | red

flotex® vision



010038 | white oak



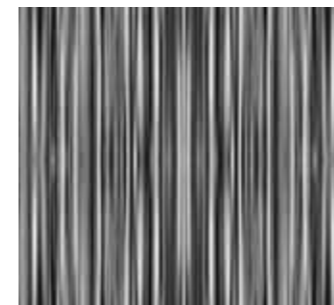
010041 | smoked beech



010042 | steamed beech



010039 | european white wood



700001 | Lines spectrum shadow



520020 | Cord berry



530016 | Spin denim



540014 | Vector quartz

Shown above is only a selection of designs and colourways available.
To view the full range please visit www.forbo-flooring.com/bus



eternal

Eternal is synonymous with assured quality. The brand's benefits are easy to see and clearly recognizable. Quite simply, Eternal is chosen for its trustworthy performance and broad range of designs and colours.

The Eternal collection mixes realistic and contemporary designs to offer a unique pattern and colour signature. Designer quality for sheet vinyl.

eternal



43002 | fog sparkle



43692 | mint sparkle



43742 | honey sparkle



43722 | bubblegum sparkle



43212 | mouse sparkle



43702 | jungle sparkle



43492 | red sparkle



43602 | plum sparkle



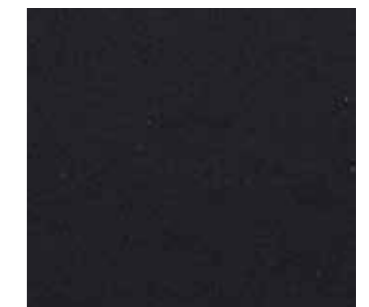
41292 | charcoal contrast



40542 | earth palette



43232 | night sparkle



43382 | carbon sparkle



10032 | fossil stucco



13712 | brushed chrome



11372 | bamboo stripe



42632 | concrete slate



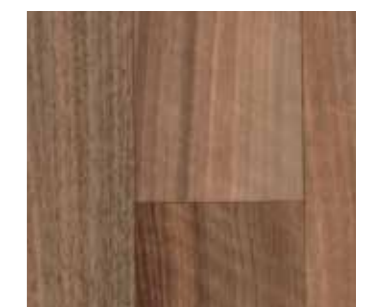
11162 | tropical beech



11442 | washed beech



11542 | traditional oak



10232 | dark walnut

Shown above is only a selection of designs and colourways available. To view the full range please visit www.forbo-flooring.com/bus



step®

Surestep Original safety flooring offers a fresh alternative to conventional safety flooring with an improved cleaner aesthetic.

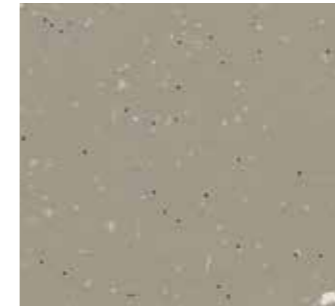
Surestep provides proven design and functionality, with a wide range of colours and slip resistant designs ideal for bus and coach flooring.

Our products can be supplied with felt backing (upon request) improving the adherence properties in combination with adhesive and sub-floors.

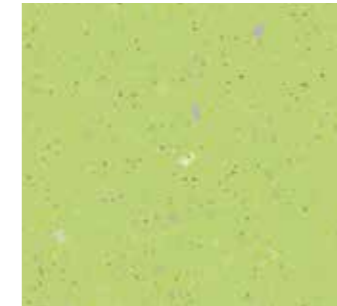
surestep®



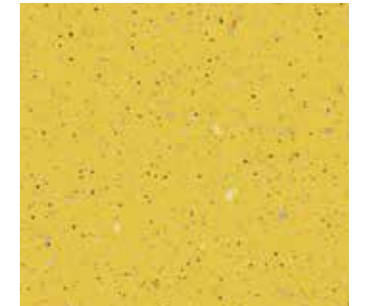
171032 (R10) | smoke



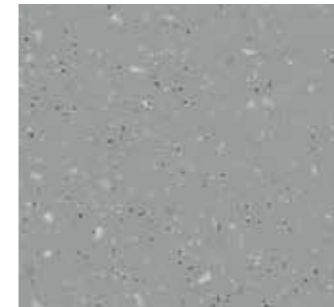
171772 (R10) | cement



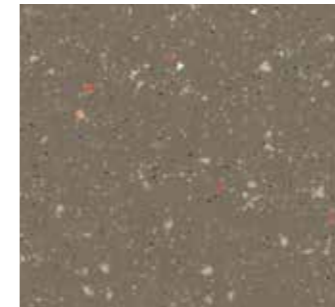
172982 (R10) | yellow green



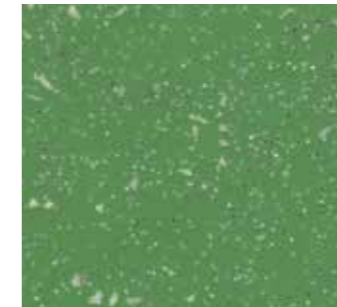
172522 (R10) | corn



172752 (R10) | slate grey



171262 (R10) | umber



172722 (R10) | apple



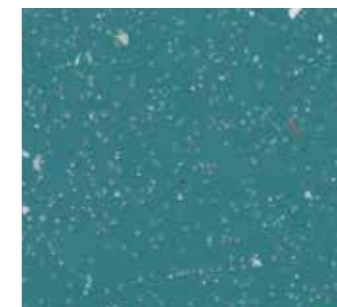
172932 (R10) | tangerine



171952 (R10) | elephant



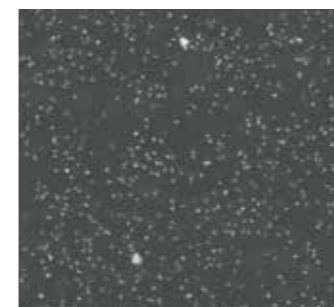
172422 (R10) | purple



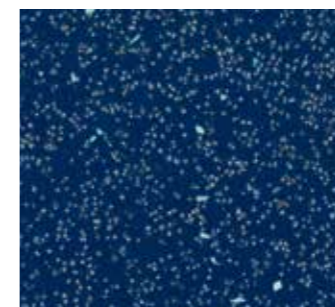
172612 (R10) | ocean



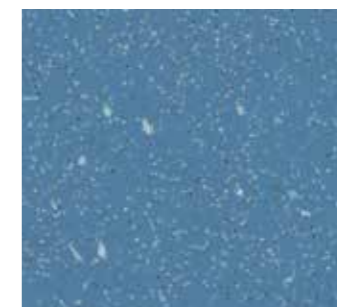
172682 (R10) | terra



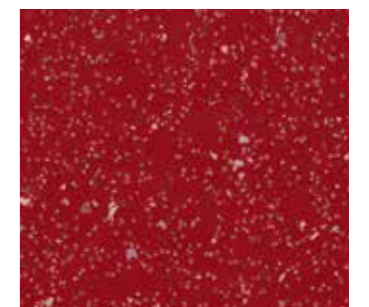
171592 (R10) | lava



171782 (R10) | night



171642 (R10) | cloudy



171562 (R10) | pepper



18982 (R10) | shadow oak



18382 (R10) | chestnut

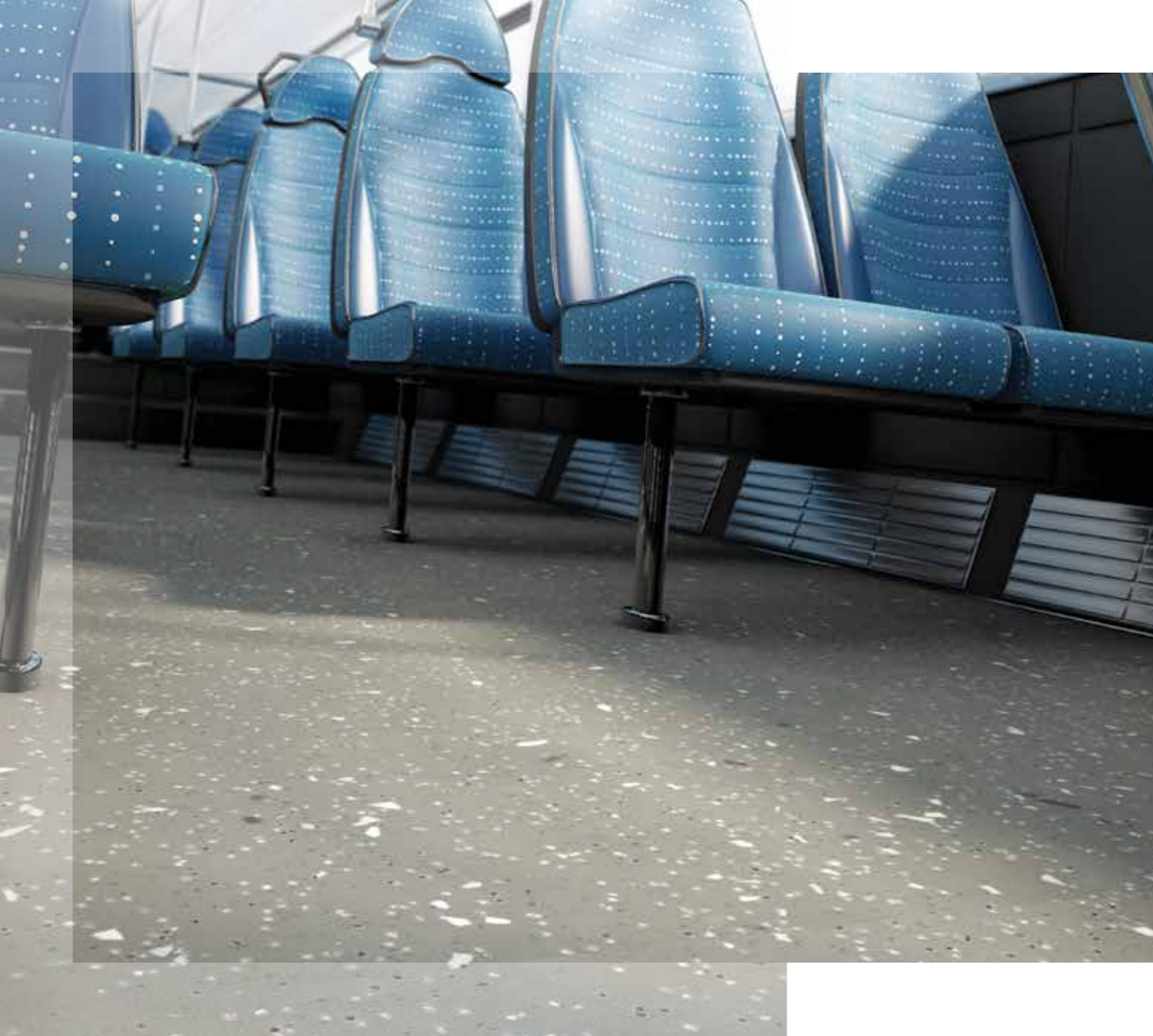


18942 (R10) | natural oak



18802 (R10) | elegant oak

Shown above is only a selection of designs and colourways available.
To view the full range please visit www.forbo-flooring.com/bus



step®

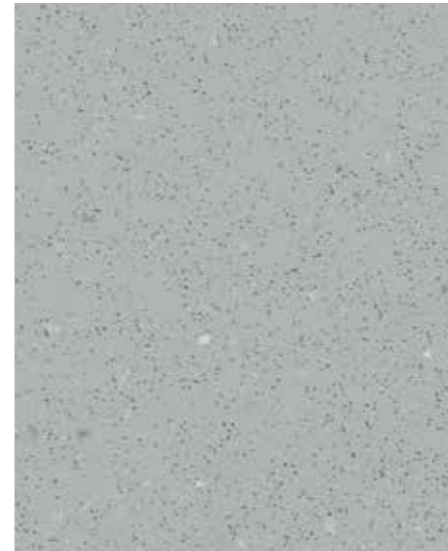
Safestep R11 safety flooring is specifically designed to match the areas where a high level of slip resistance is needed where there is increased slip risk. All items are colour co-ordinated with the R12 range.

Safestep R12 safety flooring range is a high slip resistant R12 rated floor covering ensuring slip resistance under the most extreme conditions.

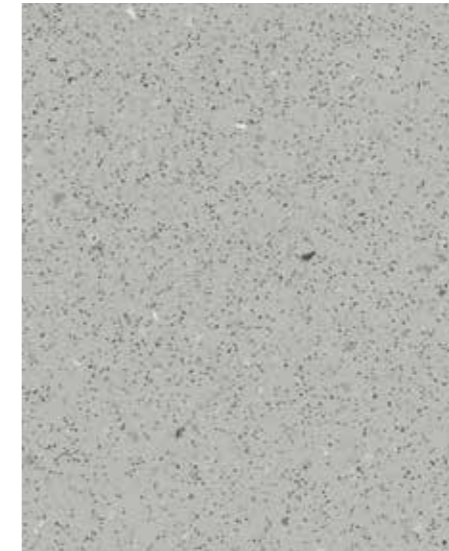
Guaranteed lifetime slip resistant performance, created with slip resistant particles throughout the wear layer.

The 9-soil hiding colours are designed to suit their application in light industrial areas. Each item is colour matched with our Safestep R11 range.

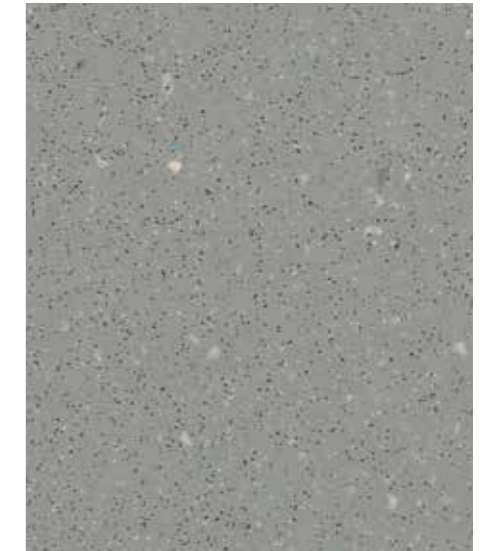
safestep®



174862 (R11) | 175862 (R12) | silver grey



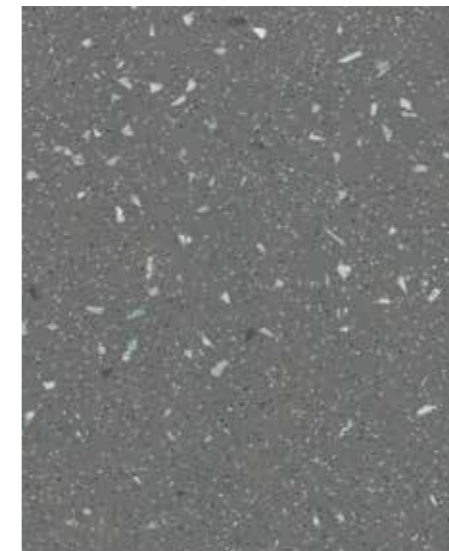
174032 (R11) | 175032 (R12) | smoke



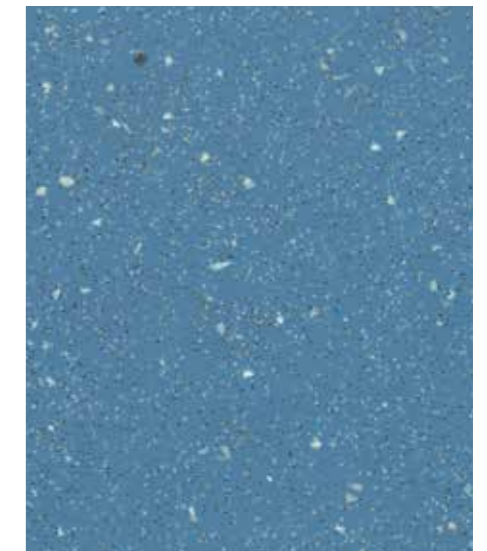
174752 (R11) | 175752 (R12) | slate grey



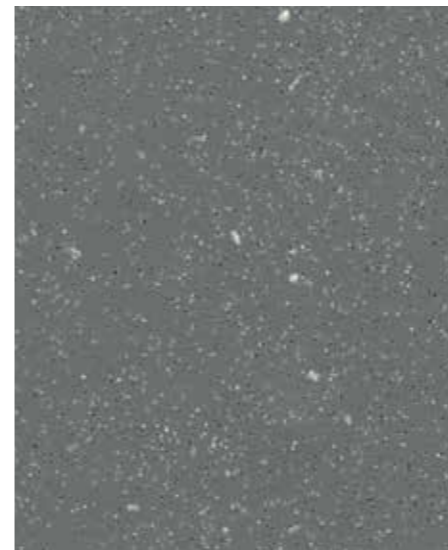
174922 (R11) | 175922 (R12) | concrete



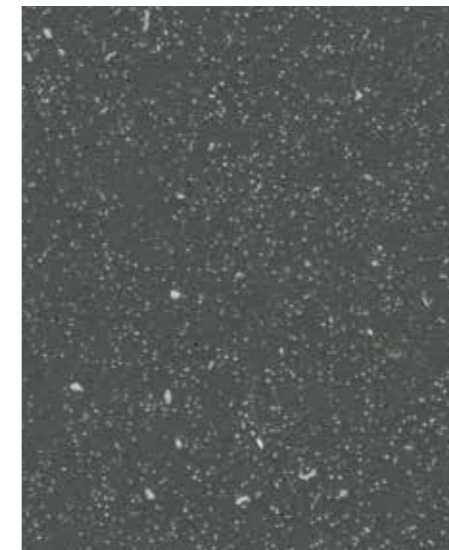
174952 (R11) | 175952 (R12) | elephant



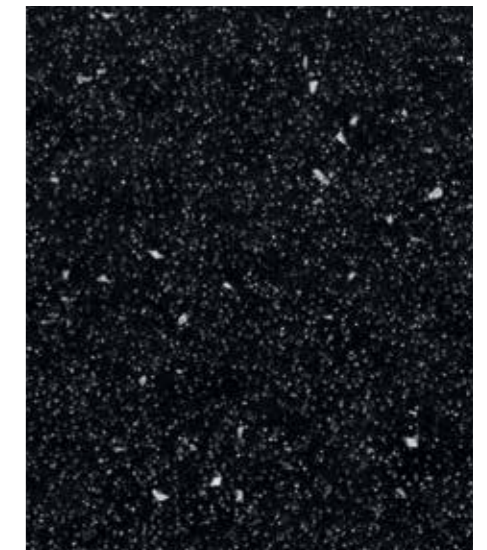
174642 (R11) | 175642 (R12) | cloudy



174092 (R11) | 175092 (R12) | granite



174592 (R11) | 175592 (R12) | lava



174992 (R11) | 175992 (R12) | charcoal

SERVICE PRODUCTS



Welding rods

Welding rods ensure high levels of hygiene because they make seams easy to clean while preventing water reaching the subfloor. Forbo offers welding rods to match to all the vinyl references.



Sealant

Helmipur SH100 is the perfect bonding solution to seal edges or seams that are hard to reach with welding rods.



Installation tools and training

Based on our experience and our continuous research we can recommend and supply a complete assortment of high-grade installation tools. These will help you to achieve a simple and professional installation of our floor coverings.

Adhesives



Please contact us at transport@forbo.com or your account manager for advice on suitable adhesives to use and self-adhesive solutions.

Aquajet

We recognise that sometimes a client wishes to create something totally unique, perhaps something specific to a particular project, such as signage to facilitate the restrictions and safety guidelines within the bus and coach. Whatever may be required, our in-house design team has skills and experience to turn ideas into reality.

From an initial concept, detailed drawing, or computer file, our design team prepares a flooring design that is transferred electronically to Aquajet cutting machines. These computer-controlled machines represent state-of-the-art cutting technology and produce precision cut items accurate to a fraction of a millimetre. The pattern is inlaid and, importantly, retains all the performance

characteristics of the original product. Whether it is a complete bus and coach layout in floor covering, a company logo, signage or thematic design, the possibilities are limitless.



SOLUTIONS

Forbo offer a truly comprehensive and compliant flooring product portfolio for the bus and coach sector. Within the portfolio are entrance systems, safety floors, vinyl floors and flocked flooring as well as all adhesives, accessories and installation tools. You'll see we also offer the widest range of design and colourway options available on the market giving you a world of choice.

Forbo have years of experience with regards to material scheduling and specific logistical requirements, both for the new build and refurbishment of bus and coach vehicles. We will work closely with you to understand your exact requirements, in order to achieve the optimum service level.

Working with Forbo means;

- A sole source of supply for all your flooring requirements
- The largest and most versatile choice of floor coverings
- A bespoke design service
- Global advice, support and cross border project management.
















COMMITTED TO THE HEALTH OF ONE



WWW.FORBO-FLOORING.COM/CHO

As our floors are part of the indoor environment in which people live, meet and work, it is our mission to design and offer products that contribute in a positive way to the health and comfort of the individual. "Committed to the health of one" introduces a focus in our commitment to sustainability that centres around all aspects that concern your health, well-being and comfort in relation to our products and services, today as well as for future generations.

TECHNICAL SPECIFICATIONS

		Surestep	Safestep (up to R12)	Eternal	Flotex colour	Flotex vision	Coral brush FR*	Coral classic FR*	Coral duo FR*	Coral welcome FR*
 Total thickness	ISO 1765 / EN-ISO 24346	2.0 mm	2.0 mm	2.0 mm	4.3 mm	4.3 mm	Approx 9 mm	Approx 8 mm	Approx 9 mm	Approx 8 mm
 Roll width	EN-ISO 24341	200 cm	200 cm	200 cm	200 cm	200 cm	185 cm (customizable)	185 cm (customizable)	190 cm (customizable)	190 cm (customizable)
 Roll length	EN-ISO 24341	20 - 27 m	20 - 27 m	Approx 25 m	30 m	30 m	27.5 m (customizable)	27.5 m (customizable)	27.5 m (customizable)	27.5 m (customizable)
Minimum order quantity							50 m ²	50 m ²	50 m ²	50 m ²
 Total weight	ISO 8543 / EN-ISO 23997	2750 gram/m ²	2750 gram/m ²	2800 gram/m ²	1800 gram/m ²	1800 gram/m ²	Approx 3400 gram/m ²	Approx 3400 gram/m ²	Approx 3000 gram/m ²	Approx 2500 gram/m ²
Pile installation weight	ISO 8543				Approx 250 gram/m ²	Approx 250 gram/m ²	Approx 920 gram/m ²	Approx 870 gram/m ²	Approx 670 gram/m ²	Approx 750 gram/m ²
 Pile thickness	ISO 1766				Approx 2 mm	Approx 2 mm	Approx 6.5 mm	Approx 6 mm	Approx 6 mm	Approx 6.3 mm
Pile material					100% polyamide	100% polyamide	100% regenerated Econyl polyamide	100% polyamide-BCF solution dyed	100% polyamide where 75% is regenerated Econyl polyamide	100% regenerated Econyl polyamide
 Dimensional stability	EN-ISO 23999 / ISO 2551	< 0.1%	< 0.1%	< 0.1%	≤ 0.2%	≤ 0.2%				
 Indentation residual	EN-ISO 24343-1	≤ 0.05 mm	≤ 0.05 mm	≤ 0.05 mm						
 Light fastness	EN ISO 105/B02	≥ 6	≥ 6	≥ 6	≥ 6	≥ 6	≥ 5	≥ 7	≥ 5	≥ 7
 Flexibility	EN-ISO 24344	Ø 10 mm	Ø 10 mm	Ø 10 mm						
 Resistance to chemicals	ISO 26987	Very good	Very good	Very good	Very good	Very good				
Organic solvents	EN ISO 105/X05						4-5	4,5	4-5	4-5
 Electrical resistance	EN 1081 / ISO 10965	> 1.10 ⁹ Ω	> 1.10 ⁹ Ω	> 1.10 ⁹ Ω	> 1.10 ⁹ Ω	> 1.10 ⁹ Ω	> 1.10 ⁹ Ω	> 1.10 ⁹ Ω	> 1.10 ⁹ Ω	> 1.10 ⁹ Ω
 Slip resistance	DIN 51130/51131 EN 13845 Anhang C EN 13893	R10 ESf μ > 0.30	R11, R12 ESf μ > 0.30	R10 μ > 0.30	R13 μ > 0.30	R13 μ > 0.30	μ > 0.30	μ > 0.30	μ > 0.30	μ > 0.30
 Fire resistance	ECE R 118-2 Annex 6	0 mm/min	0 mm/min	0 mm/min	0 mm/min	0 mm/min	0 mm/min	0 mm/min	0 mm/min	0 mm/min
 Body voltage	EN 1815 / ISO 6356	< 2 kV	< 2 kV	< 2 kV	< 2 kV	< 2 kV	< 2 kV antistatic	< 2 kV antistatic	< 2 kV antistatic	< 2 kV antistatic
 Thermal conductivity	EN12524 / ISO 8302	0.25 W/m.K	0.25 W/m.K	0.25 W/m.K	0.048 W/m.K	0.048 W/m.K	0.093 W/m.K	0.13 W/m.K	0.14 W/m.K	

*Coral FR is made to order

Forbo Flooring Systems is part of the Forbo Group, a global leader in flooring and movement systems, and offers a full range of flooring products for commercial and affordable housing and new build markets. High quality linoleum, vinyl, textile, flocked and entrance flooring products combine functionality, colour and design, offering total flooring solutions for any environment.



What to do now?

For more information about any of the products and services offered by Forbo Flooring Systems, to request samples/brochures or a visit then contact us:

Email: transport@forbo.com

Website: www.forbo-flooring.com/bus

Tel: **+44 (0)1773 744121**

Let us keep you up-to-date

Visit us at transport-flooring.com for more information.

 LinkedIn: **Forbo Flooring Transport**

 **@forbotransport**

TRANSPRESS

Email us at transport@forbo.com to sign up to our quarterly transport newsletter for:

- *Product information*
- *Design inspiration*
- *Forbo transport news*
- *Industry news*

All countries

Forbo Flooring UK Limited
High Holborn Road
Ripley
Derbyshire
DE5 3NT
UK

Tel: +44 (0) 1773 744121

Fax: +44 (0) 1773 744142

E-mail: transport@forbo.com

www.forbo-flooring.com/bus

